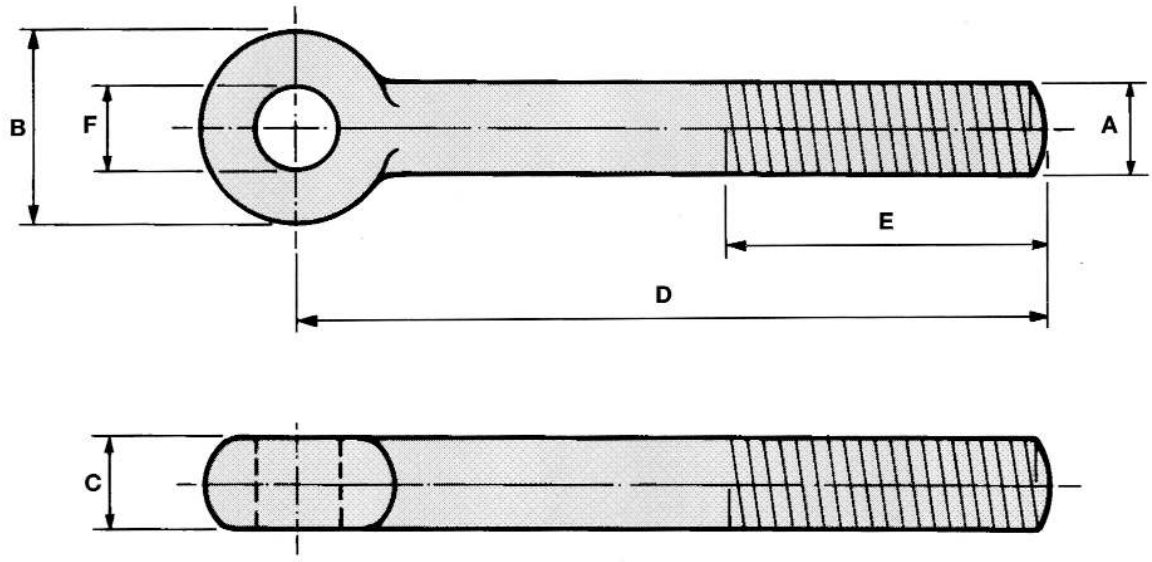


Shackle Eyebolts (Curved Sides)

**BFE
12**



A		B	C	D		E		F
mm	inches	mm	MIN mm	MIN mm	MAX mm	MIN mm	MAX mm	
M6	1/4	16	6	30	3000	15	1500	<p>To suit customers requirements</p> <p>Dimension "F" is generally drilled out to take corresponding dimension "A" of the same size</p>
M8	5/16	19	8	30	3000	15	1500	
M10	3/8	19	10	35	3000	15	1500	
M10	3/8	22	10	35	3000	15	1500	
M12	1/2	32	13	40	3000	18	1500	
M16	5/8	40	16	45	5500	20	2000	
M20	3/4	38	20	50	5500	25	2000	
M22	7/8	52	22	60	5500	25	2000	
M24	1	56	26	65	5500	30	2000	
M27	1. 1.8	64	28	68	5500	30	2000	
---	1. 1/4	60	32	70	5500	35	2000	
M36	1. 1/2	89	38	100	5500	45	2000	
M42	1. 5/8	95	42	115	5500	48	2000	
M45	1. 3/4	102	45	120	5500	50	2000	
M48	2	115	51	135	5500	60	2000	

© Brooks Forgings Ltd 2008

SPECIFICATIONS AVAILABLE

<p>MATERIAL</p> <p>CARBON STEELS</p> <p>STAINLESS STEELS</p> <p>ALLOY STEELS</p> <p>B7, 4.6, 5.6, 8.8</p>	<p>NON STANDARDS</p> <p>AVAILABLE TO SUIT</p> <p>CUSTOMERS REQUIREMENTS</p>	<p>FINISH</p> <p>SELF COLOUR</p> <p>GALVANISED</p> <p>ELECTROPLATED</p> <p>CHEMICAL BLACK</p> <p>PTFE COATING</p>
--	--	--

tel. 01384 566772 fax. 01384 637380 web. www.brooksforgings.co.uk