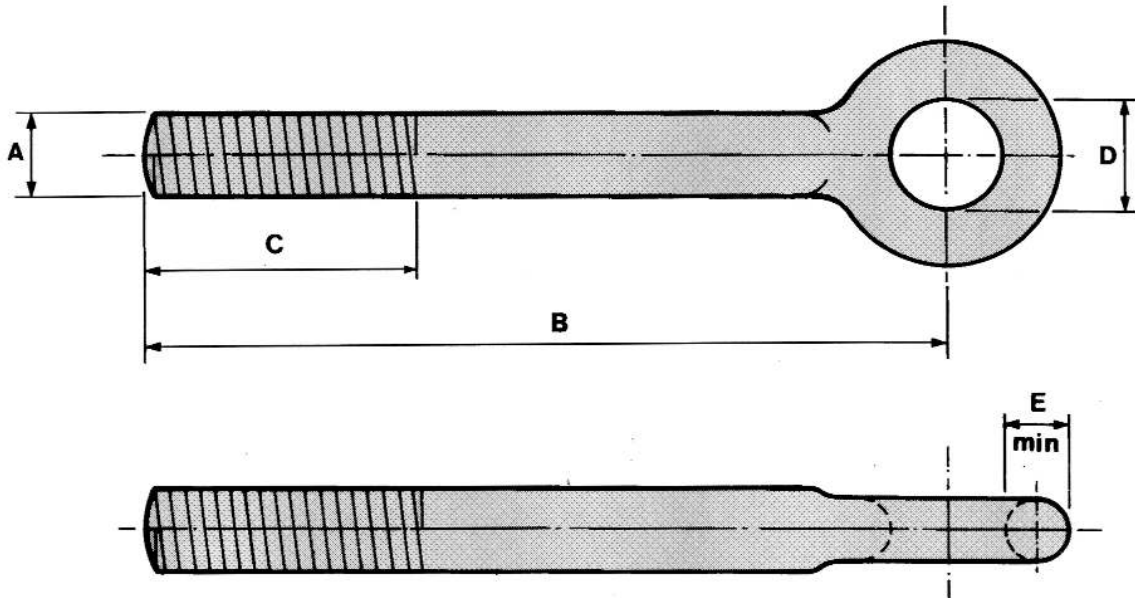


Sling Rod Eyebolts - Integral Forged Eye

TO BS3974:1974 PART 1

**BFE
22**



A	B*	C*	D	E	SWL	Weight Each
mm	mm	mm	mm	mm	kgs	kgs
M8	300	200	14	6	230	0.13
M10	300	200	16	7	360	0.21
M12	300	200	18	9	530	0.32
M16	300	200	22	12	1010	0.55
M20	300	200	26	14	1580	0.89
M24	300	200	30	17	2280	1.25
M30	300	200	36	21	3650	1.93
M36	300	200	42	26	5340	2.90
M42	300	200	48	30	7400	4.05

* DENOTES STANDARD SIZES, SHORTER LENGTHS ALSO AVAILABLE. LONGER LENGTHS OF SHANK AVAILABLE UP TO 3000MM. FORGED IN ONE PIECE THEREFORE REMOVING THE NEED FOR TIE BARS AND TURNBUCKLES.

© Brooks Forgings Ltd 2008

SPECIFICATIONS AVAILABLE

MATERIAL

CARBON STEELS
STAINLESS STEELS
ALLOY STEELS
B7, 4.6, 5.6, 8.8

NON STANDARDS
AVAILABLE TO SUIT
CUSTOMERS REQUIREMENTS

FINISH

SELF COLOUR
GALVANISED
ELECTROPLATED
CHEMICAL BLACK
SHERADIZED