



ISO 9001



Approved

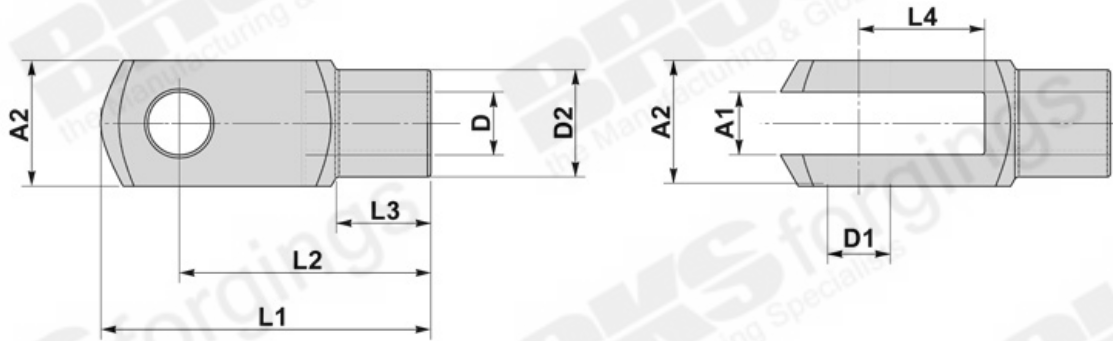


national highway sector schemes

Approved

BROOKS forgings
INDUSTRIAL CATALOGUE

BASIC CLEVIS



D	A1	A2	D1	D2	L1	L2	L3	L4
Thread	mm	mm	mm	mm	mm	mm	mm	mm
M8	8	16	8	14	42	32	12	16
M10	10	20	10	18	52	40	15	20
M12	12	24	12	20	62	48	18	24
M16	16	32	16	26	83	64	24	32
M20	20	40	20	34	105	80	30	40
M24	25	50	25	42	132	100	36	50
M30	30	60	30	52	160	120	42	60
M36	35	70	35	60	188	144	54	72
M42	42	85	42	70	232	168	63.5	84

Available in both Right and Left Hand thread.

*Other sizes available to order.



TECHNICAL INFORMATION

M8 - M16: DIN 71 752 / DIN ISO 8140

M18 - M42: Similar to DIN 71 752 / DIN ISO 8140

and according to CETOP standard.

MATERIAL

CARBON STEELS
STAINLESS STEELS
ALLOY STEELS
B7, 4.6, 5.6, 8.8

FINISH

SELF COLOUR
GALVANISED
ELECTROPLATED
SHERARDISED
PTFE COATING

